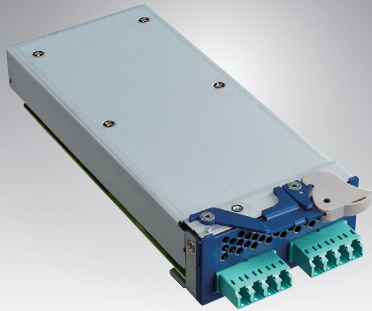


# NMC-4007

## 4 Ports 10GbE Fiber Advanced LAN Bypass Module

**NEW**

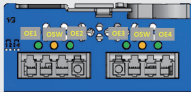


### Features

- 1x Intel® XL710-BM2
- 4 ports fiber LC (SR & LR) interface
- PCI-E 3.0 x8
- Lan Bypass model available (Advanced LAN Bypass-Bypass, Normal, Disconnect mode)
- NC-SI for IPMI Management
- RoHS compliant

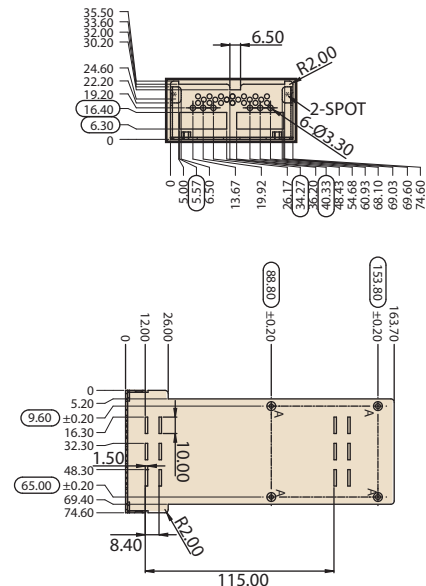


### Specifications

Controller	1x Intel® X710-BM2
Interface	PCI-E 3.0 x8
Speed	10GbE
Port	4x Fiber port
LAN LED definition	OE1 & OE2 Indicator: Green: Link OSW State Indicator: Amber: Optical Switch State 
Advanced Software Features	Teaming support IEEE 802.3ad IEEE 802.1Q VLANs IEEE 802.3 2005 flow control support Interrupt moderation
OS Support	Windows® Server 2012 R2, 2012, 2008 R2 X86-64 Linux RedHat EL 6.5 and 7.0 IA-32, X86-64, and IA-64 Linux SuSE SLES 11 SP3 and 12 IA-32, X86-64, and IA-64 FreeBSD 9 and 10 IA-32, X86-64, and IA-64 UEFI 2.1 and 2.3 X86-64 and I-64 VMware ESXi 5.1, ESXi 5.5 and ESXi 6.0 X86-64
Operating Conditions	Operation: 0°C ~ 45°C Storage: -20°C ~ 67°C
Power Voltage & consumption	+12V ± 15% 17W
Dimension (mm)	163.7 x 74.6 x 35.5
Compliance	CE/FCC

### Dimensions

Unit: mm



### Ordering Information

Part Number	Description
NMC-4007-000110E	4 ports 10GbE Fiber LC(SR) w/Advanced Bypass NMC
NMC-4007-000111E	4 ports 10GbE Fiber LC (LR) w/Advanced Bypass NMC