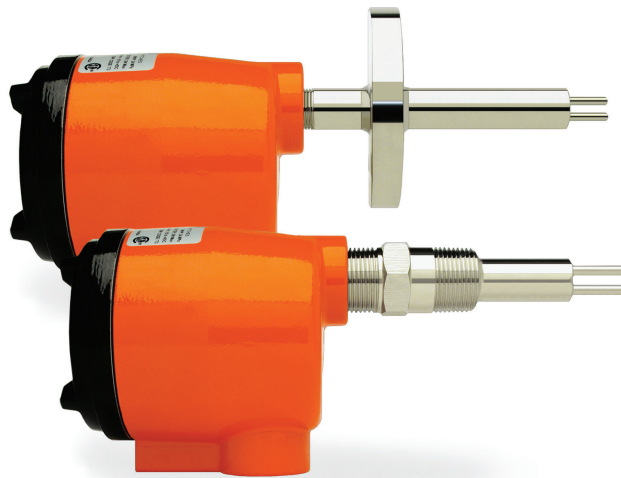


Product Group Overview



CLASSIC™ Series

Thermal Flow, Level, Interface &
Temperature Switches & Transmitters



CRN
Canadian
Registration
Number



KAYDEN®
Helping the World Switch™

TC Telematic.com

CLASSIC™ 800 Features Overview

Series	CLASSIC™ 800
Models & Applications	810, 812, 814, 816, 828, 830 & 832 Flow, Level, Interface & Temperature
Process Connections	810: 1/2" to 2" MNPT Threaded 812: Flanged 814: Flanged Retractable Packing Gland 816: 1" MNPT Threaded Retractable Packing Gland 828: 1" to 3" Sanitary Tri-Clamp 830: 3/4" FNPT (InLine) 832: Flanged (InLine)
Insertion 'U' Lengths	1.2", 2", 3", 4", 6", 9", 12" & 18" Standard (most models) Custom lengths available to 240"
Sensor Material	316/316L Stainless Steel, Titanium Gr. 2, Hastelloy C-276 & Monel 400 830 & 832: 316/316L Stainless Steel c/w Nickel Braze 828: 304/316/316L Stainless Steel
Remote Electronics Option	Explosion-proof - Standard
Input Power	Universal AC & DC
Power Consumption	Maximum: 6.0 watts (fully configured)
Communications	RS-485
Outputs	Two SPDT sealed relay contacts 4 amps resistive 230 VAC / 24 VDC Modbus via RS-485. 4-20 mA current loop
Temperature Compensation	Yes
Operating Temperature - Sensor	Continuous Use: -45°C to +200°C (-50°F to +392°F) 814 & 816: -45°C to +160°C (-50°F to +320°F)
Operating Temperature - Electronics	Continuous Use: -55°C to +65°C (-67°F to +167°F)
Operating Pressure - Sensor	Maximum Design Pressure: 24 MPa (3500 psig) Temperature derated. Visit telematic.com for pressure ratings per model.
Self-Test	Automated diagnostics performed on electronics & sensing elements
Agency Approvals	